

产品规格书

SPECIFICATION

客户名称

CUSTOMER

产品名称

PART NAME

拨码开关 (SMT SWITCH)

产品型号

PART MODEL

DA6

规格书编号

SPECIFICATION NO.

GOSUN-DA6-02-1

客户确认及意见:

CUSTOMER APPROVAL & COMMENTS:

编制 ISSUE	审核 CHECK	批准 APPROVAL	盖章 DEPT

Address: Xingong Road, Xiaolin, Cixi, Zhejiang, China

Tel: +86-574-63506685

Fax: +86-574-63989953

http: //www .gosun-tech.com

MATERIALS

COVER:Engineering Plastics, Black
 BASE: Engineering Plastics, Black
 KEY: Engineering Plastics,White or orange
 TMERMINAL:Alloy Coper,Plating Gold or Tin

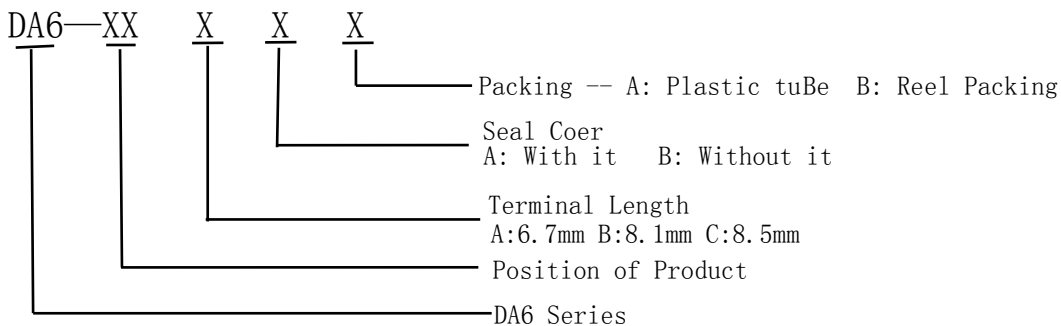
ELECTRCAL SPECIFICATIONS

- 1. Contact resistance (initial) : $\leq 50m\Omega$
- 2. Contact resistance (after life test) : $\leq 100m\Omega$
- 3. Contact rating (Contact rating) : 25 mA 24VDC
- 4. Contact rating (Non-Contact rating) : 100mA
- 5. Insulation resistance: $\geq 1000M\Omega$. at 500VDC
- 6. Dielectric strength: 500VAC Min. for 60 seconds.1mA
- 7. Capacitance between adjacent switches: $\leq 5PF$

MECHANICAL SPECIFICATIONS

- 1. Operation force: $\leq 8N$
- 2. Mechanical life: 2000 operations
- 3. Vibration: Per GJB360A-96
- 4. Operating Temperature: $-25^{\circ}C \sim +70^{\circ}C$
- 5. Storage Temperature: $-40^{\circ}C \sim +85^{\circ}C$
- 6. Solderability: After flux $230 \pm 5^{\circ}C$ for 5 ± 0.5 seconds, 95%coverage
- 7. Resistance to soldering heat : $260 \pm 5^{\circ}C$ for 5 ± 1 seconds

PRODUCT NAMING:

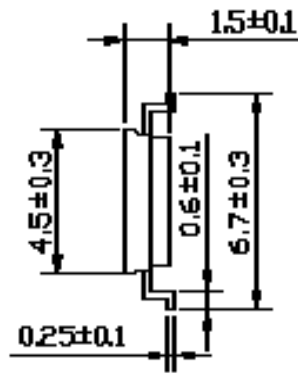
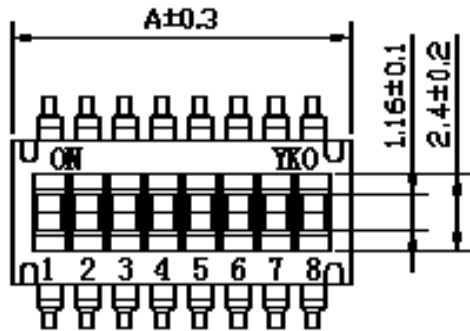


Product position

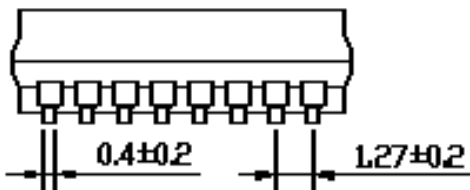
02	04	06	08	10
two	four	six	eight	ten

4. Shape and Assembly size

Terminal length 6.7mm:

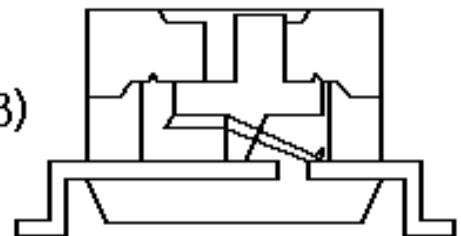


(A) Type

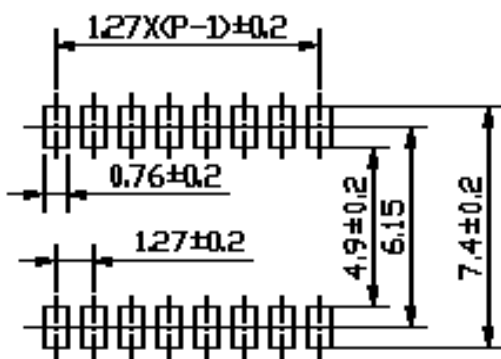


DIMENSI ON A (General tolerance: ± 0.3)

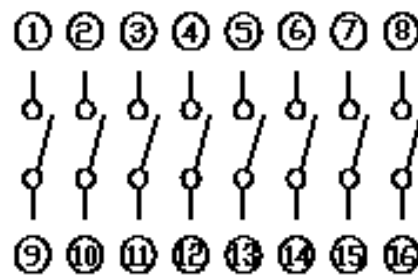
POSITIONS	2	4	6	8	10
A	3.8	6.3	8.9	11.4	13.9



CONSTRUCTION

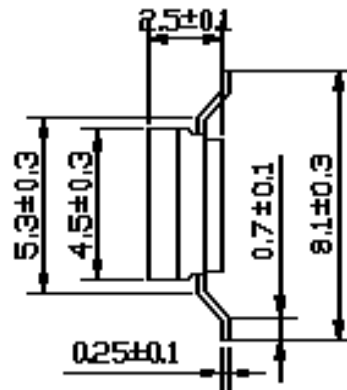
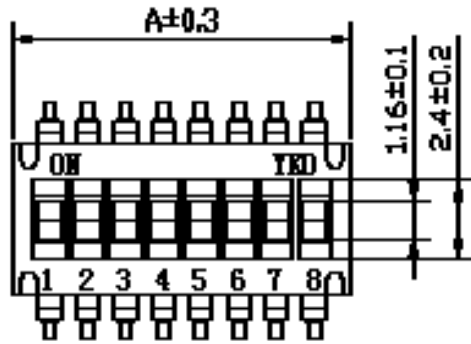


(A) Type P. C. B LAYOUT

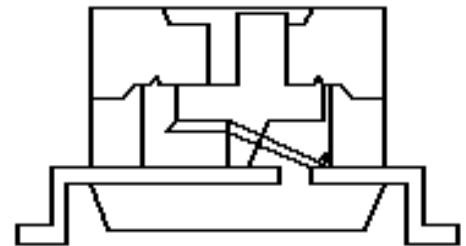
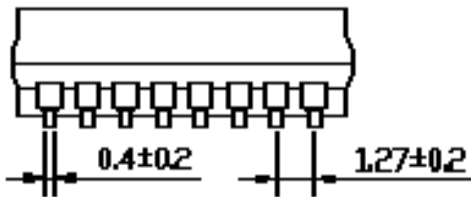


CIRCUIT DIAGRAW

Terminal length 8.1mm



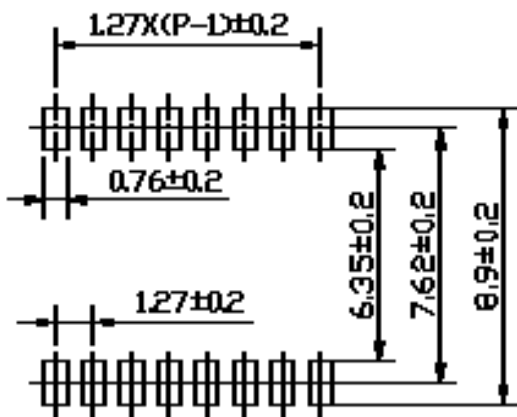
(B) Type



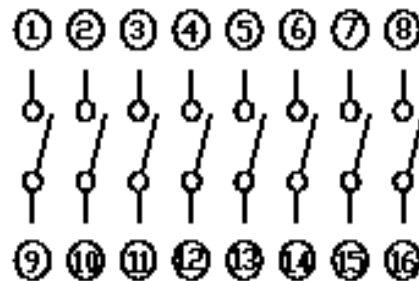
CONSTRUCTION

DIMENSION A (General tolerance: ±0.3)

POSITIONS	2	4	6	8	10
A	3.8	6.3	8.9	11.4	13.9

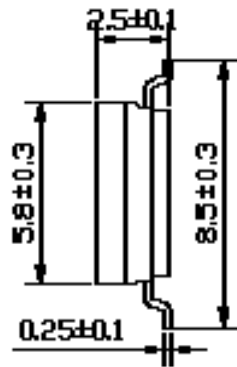
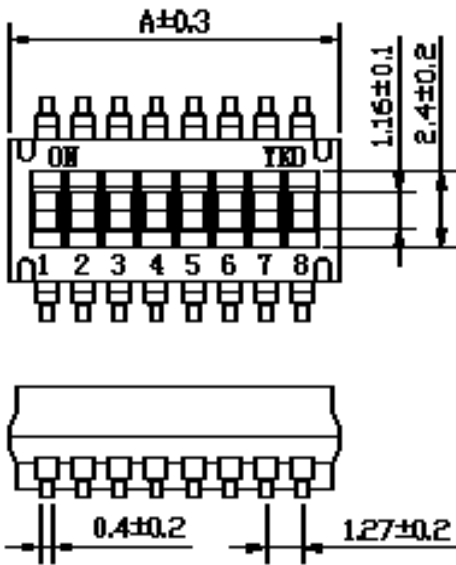


(B) Type P. C. B LAYOUT

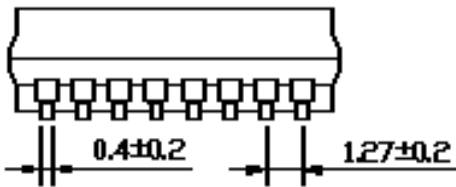


CIRCUIT DIAGRAW

Terminal length 8.5mm

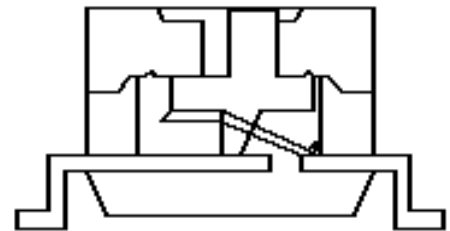


(C) Type

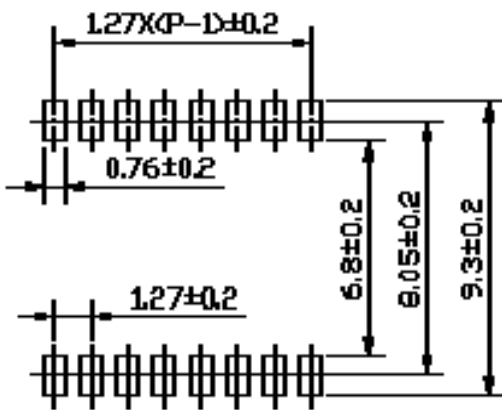


DIMENSI ON A (General tolerance: ± 0.3)

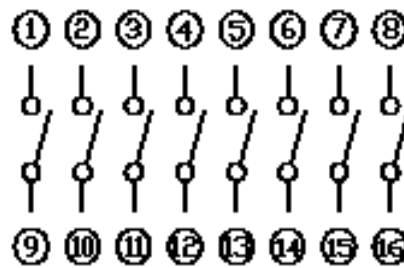
POSITIONS	2	4	6	8	10
A	3.8	6.3	8.9	11.4	13.9



CONSTRUCTION



(C) Type P. C. B LAYOUT



CIRCUIT DIAGRAW