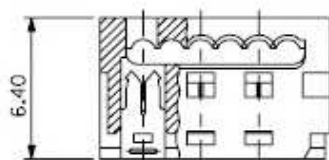
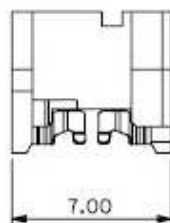
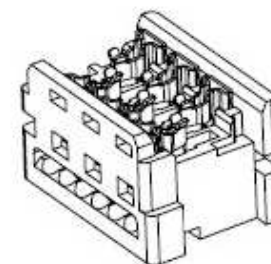
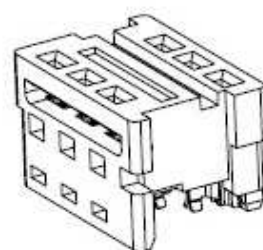
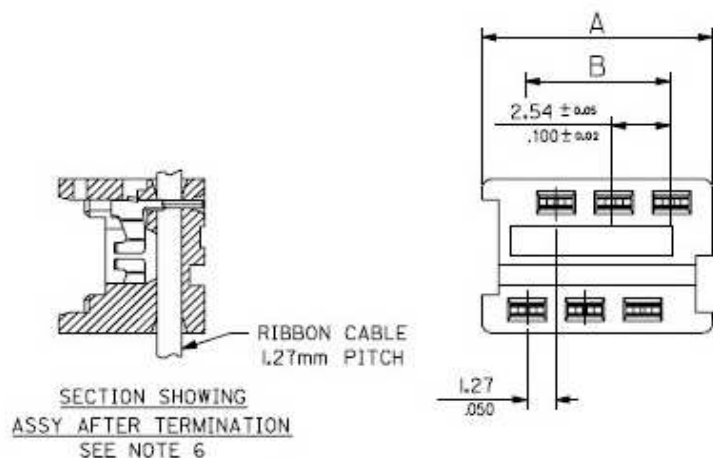


ROHS



■ Specifications(规格) :

- Voltage rating(额定电压): 500V AC / DC
- Current rating(额定电流): 1.0A AC / DC
- Withstanding voltage(耐压值): 500V AC/minute
- Temperature range(工作温度): -40° C~+105° C
- Insulation resistance(绝缘电阻): ≥1000MΩ
- Contact resistance(接触电阻): ≤15mΩ

Circuit	Dimension	
	A	B
04	7.59	3.81
06	10.13	6.35
08	12.67	8.89
10	15.21	11.43
12	17.75	13.97
14	20.29	16.51
16	22.83	19.05
18	25.37	21.59
20	27.91	24.13
22	30.45	26.67
24	32.99	29.21
26	35.53	31.75

■ I D T

- Poles (PIN数) :04-26P
- Material (材质) :PBT UL 94V-0
Pin针:Phosphor Bronze (磷青铜)
Finish (电镀) :Tin-Plated (镀锡)

03						一般公差 GENERAL TOLERANCE	料号 Part NO:				
02				绘图 DRA		.X ±0.3 .XX ±0.2 .XXX ±0.1	FDC4-XX P				
2010/08/12	A	B		审核 CHK		角法 PROJECT	品名 TITLE:	核准 APPD	审核 CHK	绘图 DRA	日期 DATA
日期 DATA	旧版次 OLD REV	新版次 NEW REV	变更内容 DESCRIPTION	核准 APPD		⊕	1.27MM IDT Tin Plated	Eis	Clam	Wang	2010/08/12
						⊕	单位 UNIT MM	比例 SCALE 1/1	图号 NUMBER A-001	版次 REV A	